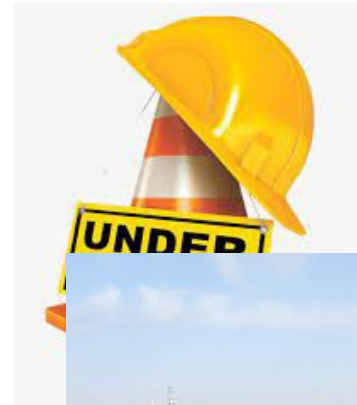




Authorization to enter into a Cooperative Agreement with the City of Palo Alto regarding the construction of the Palo Alto Horizontal Levee Project

Project Highlights

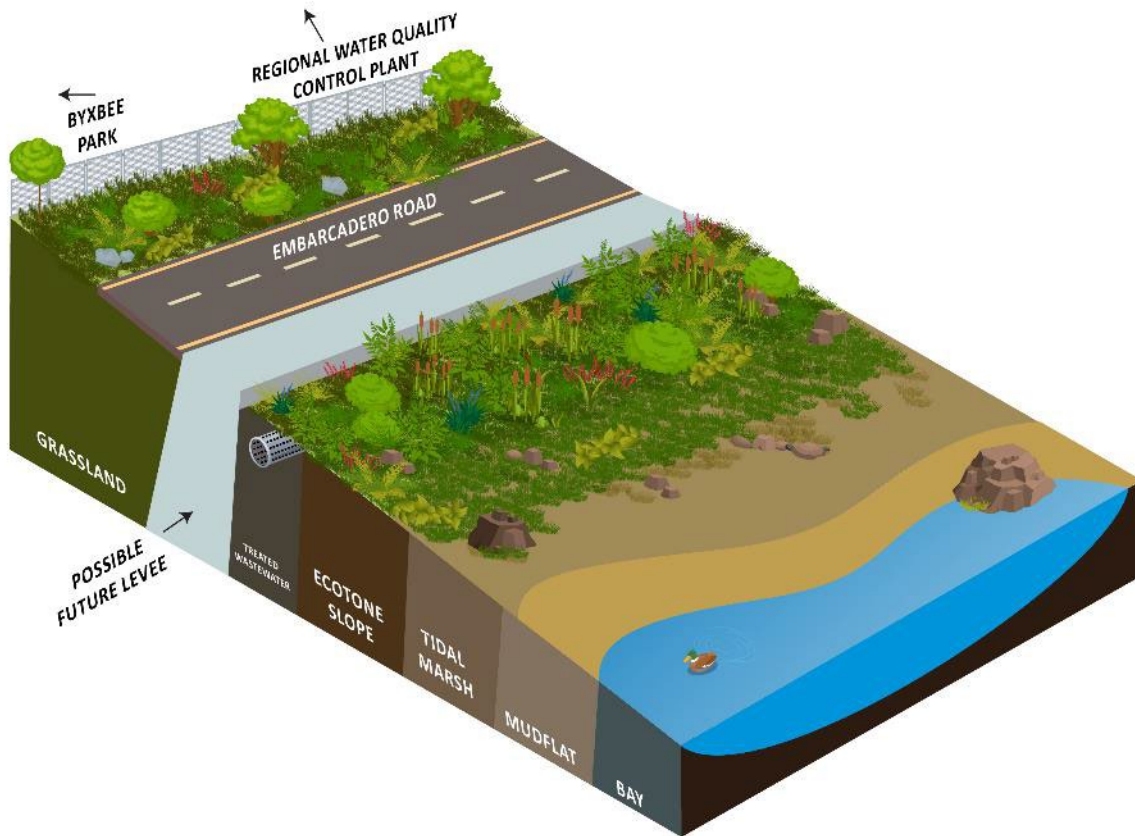
- **First horizontal levee** with treated wastewater conveyance directly to the SF Bay
- **Implements Estuary Blueprint** Task 3-1, 4-1, 4-2 – focused on design and implementation of nature-based shoreline adaptation projects
- **Innovative** design, permitting and construction strategies
- **Paves the way** for future horizontal levee projects regionally
- **Funding** from US EPA Region 9 WQIF and Climate Ready Estuaries, State Coastal Conservancy, City of Palo Alto



Expected Construction start date – July 2024

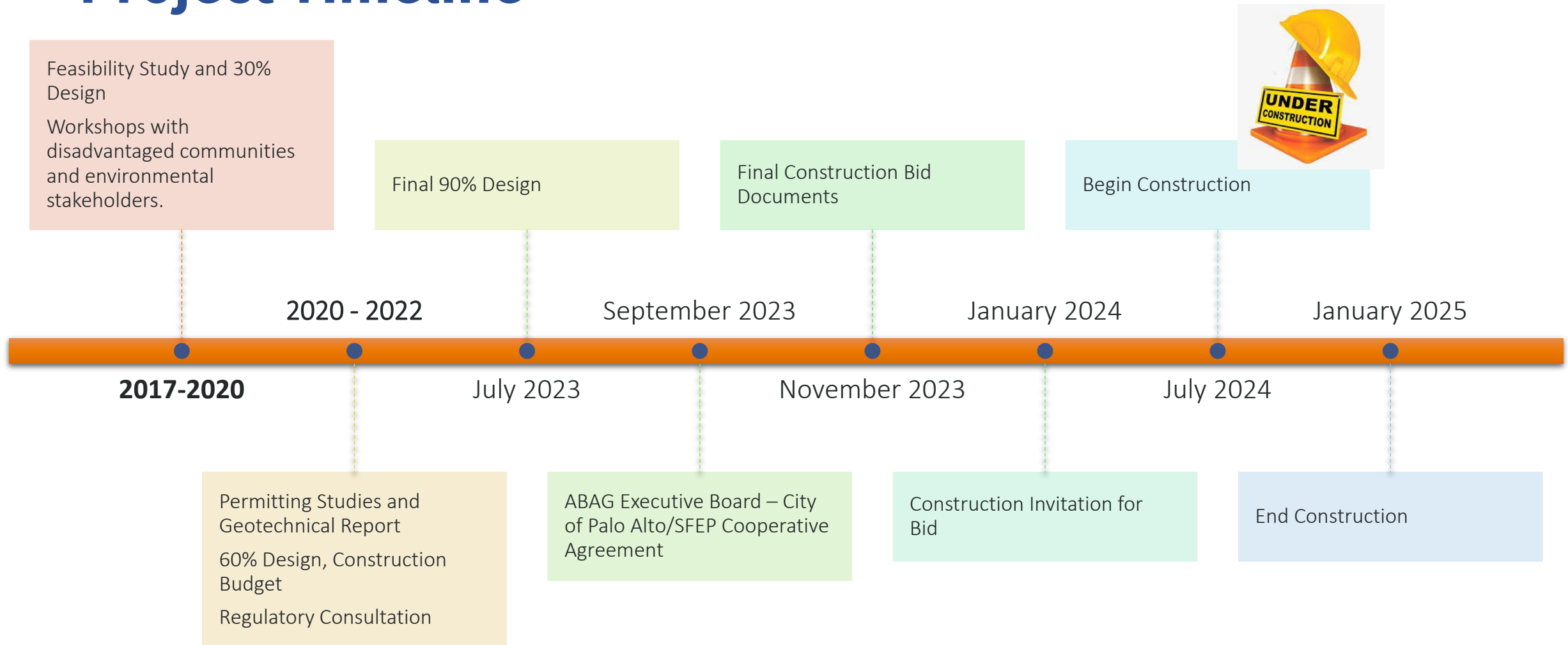


Palo Alto Horizontal Levee – Project Goals



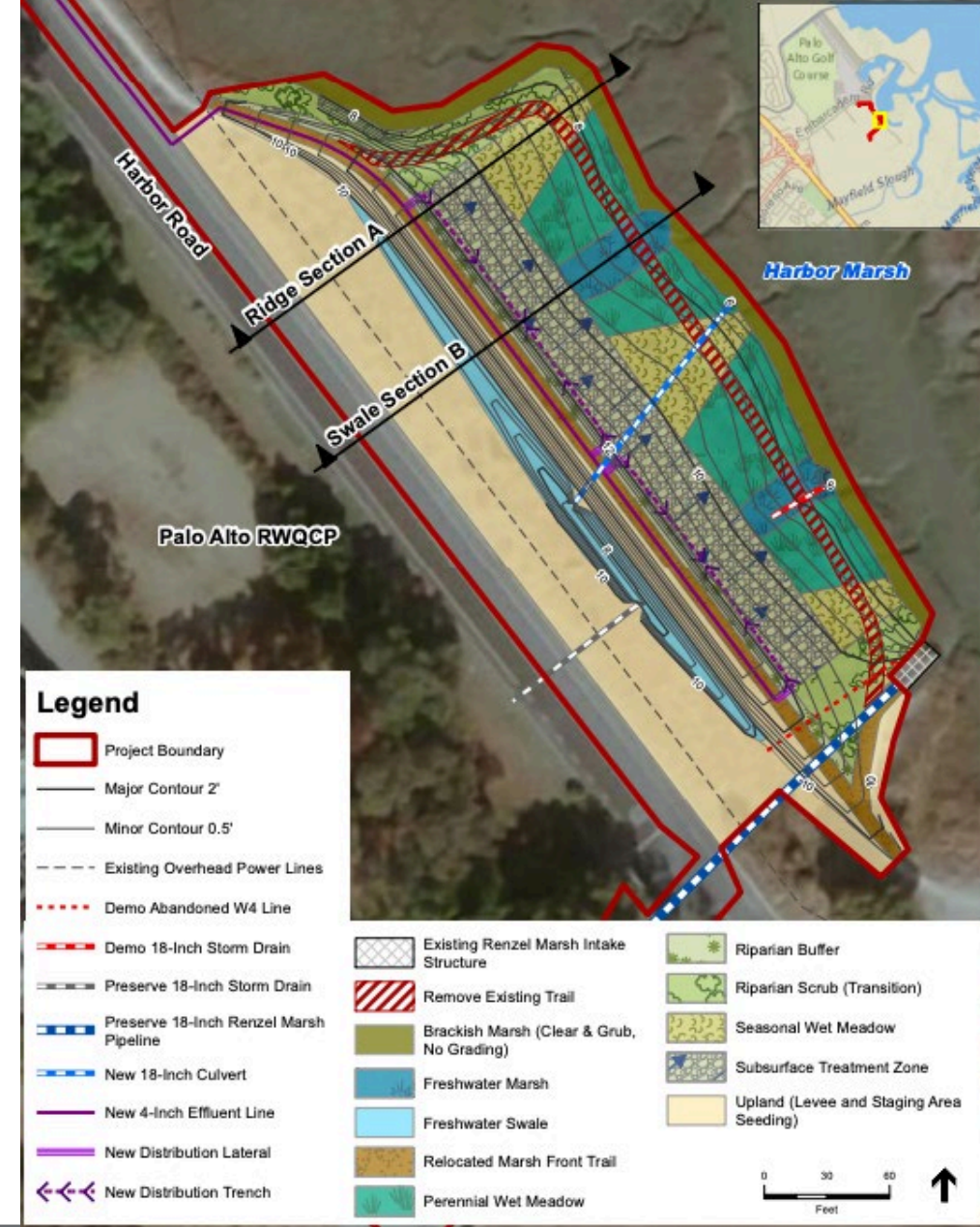
- Improve habitat along the perimeter of Harbor Marsh.
- Adapt to sea level rise and coordinate with future larger levee improvement project (i.e., SAFER Bay/Shoreline Study).
- Maintain public access to the existing trail system while providing opportunities for compatible low-impact recreation, increased social infrastructure, and educational opportunities on sea level rise.
- Ensure perspectives of marginalized communities are incorporated into social infrastructure and educational components.
- Provide polishing treatment to discharged treated wastewater.

Project Timeline



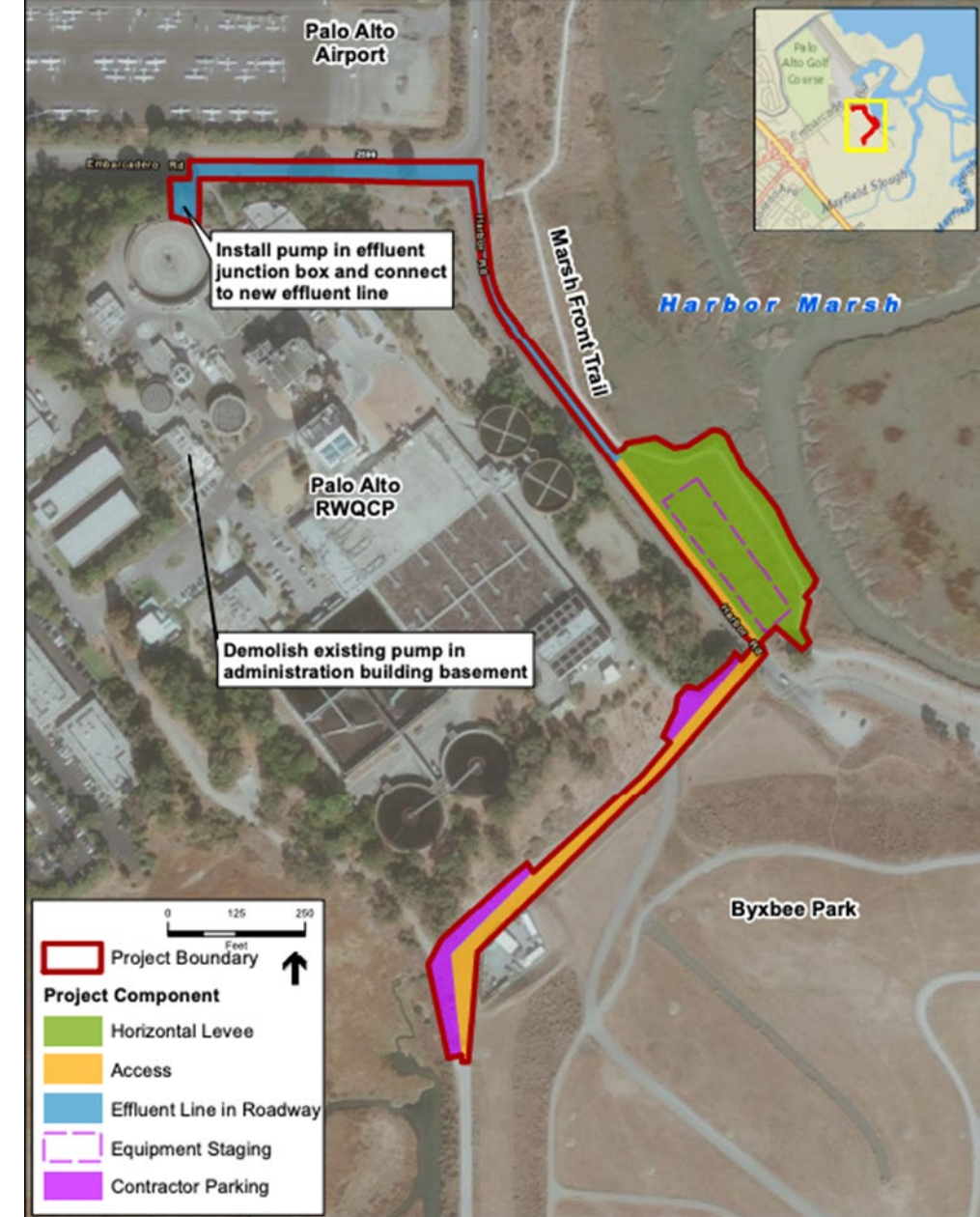
Project Components

- 500-linear-foot levee berm
- 315-linear-foot horizontal levee and irrigated ecotone
- New pump at the RWQCP
- Buried pipeline (effluent line) along Harbor Road and Embarcadero Road
- Relocated trail



Project Setting

- Harbor Marsh and Baylands Nature Preserve backed by low levees and a closed landfill
- Significant City of Palo Alto infrastructure behind these levees: RWQCP, airport, Palo Alto Flood Basin, roads and light commercial development
- Coordinates with SAFER Bay levee/Shoreline Study and shares the same alignment with two alternatives



Partnership and Programming

- ABAG/SFEP and City of Palo Alto – partners on construction, construction management, biological monitoring. All contracts will be managed by ABAG/SFEP
- Community-based monitoring and education with Nuestra Casa (East Palo Alto) and CSU Channel Islands
- Plant propagation, community planting days and post-construction monitoring with Save The Bay



Partnership Responsibilities



City of Palo Alto

Landowner

Permittee on all permits

Responsible for long-term maintenance of the site

At the table in all aspects of design/engineering, construction, construction management, planting, monitoring and community outreach



ABAG/SFEP

Contract administration for design/engineering, construction, construction management, planting and some monitoring

Components of the Cooperative Agreement

- Lays out responsibilities for:
 - Construction
 - Construction Management
 - Planting – Save The Bay
 - Monitoring
- Describes how ABAG/SFEP will coordinate to ensure project success

Project Contacts

Heidi Nutters

Senior Program Manager, SF Estuary Partnership

heidi.nutters@sfestuary.org

Sam Engelage

Senior Engineer, City of Palo Alto

Samantha.Engelage@cityofpaloalto.org

