

**Metropolitan Transportation Commission  
Bay Area Toll Authority  
Bay Area Infrastructure Financing Authority**

**Upcoming Contract Opportunities  
Open House**



**March 13, 2017**

# Agenda

- Doing Business with MTC, BATA and BAIFA
- Online Bid and Proposal Submission
- DBE and SBE Programs
- Upcoming Contracting Opportunities
- Questions and Answers
- Networking



# About Us

- Metropolitan Transportation Commission (MTC)
- Bay Area Toll Authority (BATA)
- Bay Area Infrastructure Financing Authority (BAIFA)
- Bay Area Headquarters Authority (BAHA)
- Metropolitan Transportation Commission Service Authority for Freeways and Expressways (MTC SAFE)



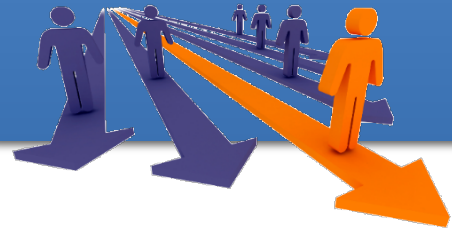
# Doing Business with MTC, BATA and BAIFA



- Register with us to receive email notifications regarding contracting opportunities.  
Go to: [procurements.mtc.ca.gov](http://procurements.mtc.ca.gov) and [mtc.bonfirehub.com](http://mtc.bonfirehub.com)
- Create your profile and select type of business, specific trades, services or specialties your firm can provide to take full advantage of the system notifications.
- Firms that register as Planholders for a contract opportunity will receive email notifications of addenda and/or changes specific to that contract opportunity.



# Types of Competitive Procurements



## 1. Request for Proposals

**Type:** Best value

**Used for:** Operations & Maintenance, System Design, etc.

## 2. Request for Qualifications

**Type:** Qualifications based

**Used for:** A&E, Legal Services, etc.

## 3. Invitation for Bids

**Type:** Low Bid

**Used for:** Construction, Public Works, etc.



# What All Proposers Should Do



**1. Ask Questions**



**2. Register as a planholder to get notice of addenda**



**3. Attend Proposers Conference**



**4. Double check submittals to ensure all required information/documentation are included**



**5. Avoid last minute submissions. Submit the proposal/SOQ before the due date and time.**

# Online Bid and Proposal Submittal

**Procurement Portal**  
Metropolitan Transportation Commission

Log in | **Open Public Opportunities** | Past Public Opportunities

Search...

Stage	Ref. #	Project	Close Date	Days Left	Action
OPEN	2016.1	California Metropolitan Planning Organization (MPO) Cooperative Household Travel Survey	Aug 26th 2016, 4:00 PM PDT	2	<a href="#">View Opportunity</a>

Technical Support | Portal Security | Terms of Service

Powered by Bonfire

## Improved User Interface:

- Provides project details, an interactive procurement calendar and required information in a user friendly display
- Provides a digital, interactive Question and Answer platform, significantly reducing the response time from MTC
- Allows bidding vendors and suppliers to painlessly submit proposals digitally, eliminating the costly process of submitting multiple hard copies via courier or in-person
- Facilitates the viewing and evaluating of proposals all in one place reducing the time between proposal submission and award

Log in or Register Hide

**Register as a Vendor**

ORGANIZATION NAME

FIRST NAME LAST NAME

EMAIL EMAIL (AGAIN)

PASSWORD PASSWORD (AGAIN)

DBE

CUCP CERTIFICATION NUMBER

SBE

CA DGS SBE CERTIFICATION NUMBER

ANNUAL REVENUES

[Create account >](#)

**Log in with your Bonfire Account**  
[Show account login screen](#)

**Need Help?**  
[Contact Bonfire Support here >](#)

# Online Bid and Proposal Submittal

## 2016.1 - California Metropolitan Planning Organization (MPO) Cooperative Household Travel Survey

Metropolitan Transportation Commission [Back to list](#)



### Project Details

**Project:** California Metropolitan Planning Organization (MPO) Cooperative Household Travel Survey

**Ref. #:** 2016.1

**Type:** RFP

**Open Date:** Jun 21, 2016 4:00 PM PDT

**Questions Due:** Aug 26, 2016 4:00 PM PDT

**Closing Date:** Aug 26, 2016 4:00 PM PDT

**Days Left:** 2

August 2016

[prev](#) [next](#)

Sun	Mon	Tue	Wed	Thu	Fri	Sat
31	1	2	3	4	5	6
OPEN						
7	8	9	10	11	12	13
OPEN						
14	15	16	17	18	19	20
OPEN						
21	22	23	24	25	26	27
OPEN						
28	29	30	31	1	2	3

#### Project Description:

In August 2015, MTC entered into a Memorandum of Agreement (MOA) with the Southern California Association of Governments (SCAG), the Sacramento Council of Governments (SACOG), and the San Diego Association of Governments (SANDAG) (collectively, "MPO Partners") to work jointly on the development and maintenance of a household travel survey program ("Program").

This RFP, in combination with the MPO Partners' MOA (attached hereto as Appendix E), allows the MPO Partners to share resources and expertise during survey development and refinement phases, but then to administer household travel surveys within their respective regions independently. MTC seeks household travel survey experts to assist the MPO Partners in carrying out this Program, which will be carried out in three phases:

- Phase 1, the cooperative survey development phase;
- Phase 2, ongoing maintenance of survey infrastructure, methodology testing, and refinements; and
- Phase 3, travel survey data collection, performed independently within each region.

#### Requested Information:

Please structure your submission into the following number and types of documents:

Name	Type	# Files	Requirement
Proposal	File Type: PDF (.pdf)	Multiple	REQUIRED
Total Cost	Data Type: Number	N/A	REQUIRED

### Messages

Please log in to ask a question.

### Submission

In order to prepare a submission, please log in. If you do not have a Bonfire account, you can create an account by clicking the Log in / Register button below.

[Log in / Register](#)



# Disadvantaged Business Enterprise (DBE) & Small Business Enterprise (SBE) Programs



- In 2009, MTC wholly adopted the Caltrans DBE Program and to assist Caltrans in achieving its DBE goals.
- MTC develops and monitors per contract DBE goals for federally funded contracts.
- In 2015, MTC adopted a Construction Project SBE Program to assist SBE firms in participating in construction contracts.
- To further provide economic opportunity for the residents and businesses, and stimulate economic development in the San Francisco Bay Area Region, MTC began the Professional Services Small Business Enterprise (SBE) Pilot Program in 2017.

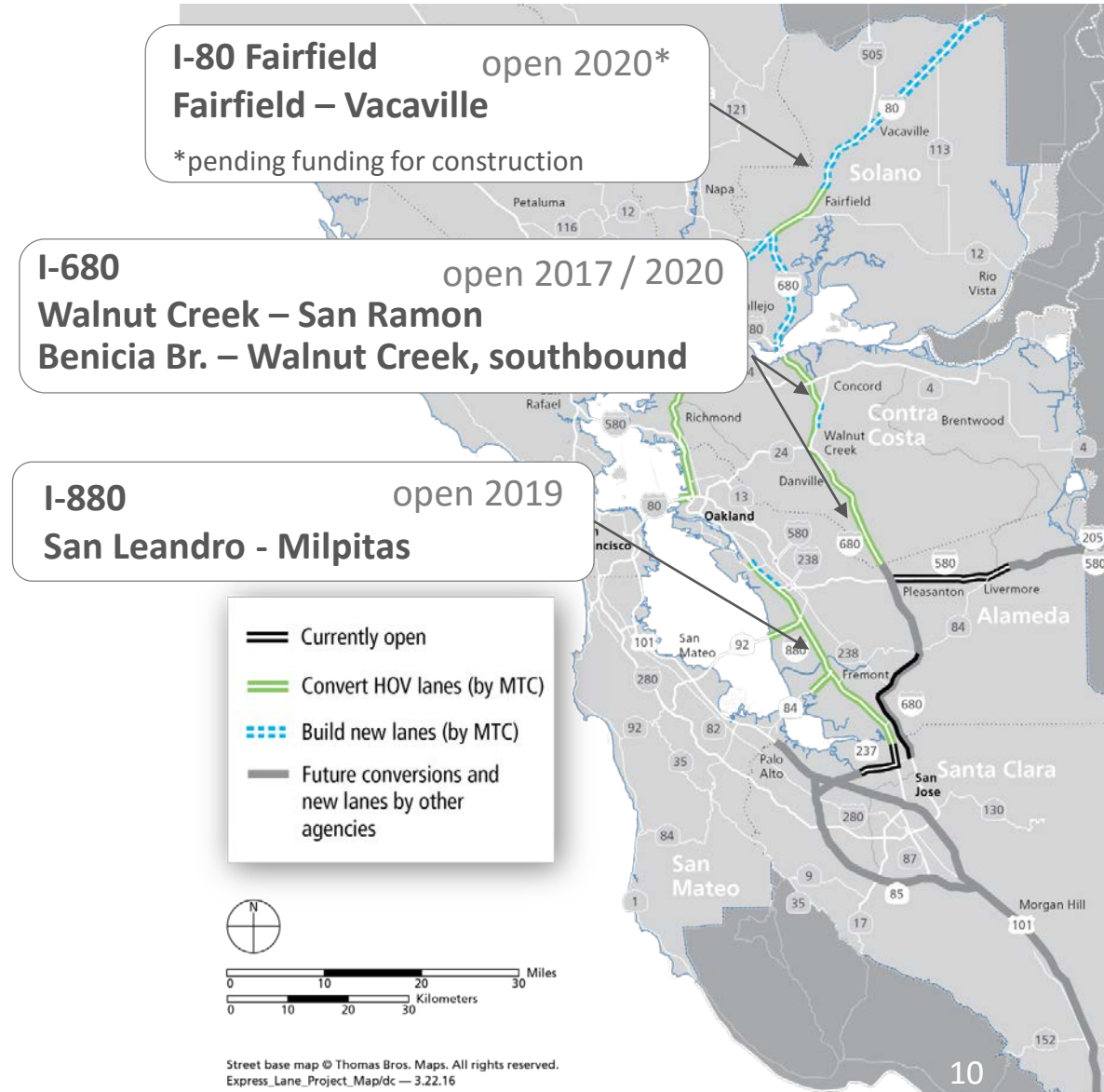


## Title: Express Lane Program Advisor

### Background

- 270 miles authorized
- \$340 M funded program
- Four express lane projects underway
- Backhaul communications network

More information at  
[mtc.ca.gov/express-lanes](http://mtc.ca.gov/express-lanes)  
[expresslanes.511.org](http://expresslanes.511.org)



## Title: Express Lane Program Advisor

### Scope

- Partnership with MTC staff: augment staffing; provide technical expertise
- Support for on-going operations and opening new corridors

1. Technical and strategic advice, research and analysis
2. Toll system technical advice and project management
3. Program coordination & selected controls
4. Support for customer education when opening new corridors
5. Project management for civil or backhaul network improvements, as needed

**Interoperability**  
**Emerging technologies**  
**Project delivery**<sup>6C</sup>  
Clean air vehicles  
**Regional coordination**  
**Contracting strategy**  
Vehicle occupancy detection

## Title: Express Lane Program Advisor

### Schedule\*

RFP Release: Late Spring/Summer 2017

Contract Award: October - November 2017

Contract Start: End of 2017

Duration: 4 to 5 years



\*Dates are subject to change. Check the agency website <http://procurements.mtc.ca.gov/> for more information.

## **Title: Toll Bridge Maintenance and Rehabilitation Assessment**

### **Description:**

BATA is seeking consultant support to provide practical assistance to BATA and Caltrans to better plan, schedule, direct, and monitor work on the bridges, including update of the Toll Bridge Rehabilitation Program and assessment of toll bridge maintenance on the Bay Area's seven State-owned toll bridges. The scope of work is still under development.

**Schedule\*:** To be advertised by BATA in next 60 to 90 days

*\*Dates are subject to change. Check the agency website <http://procurements.mtc.ca.gov/> for more information.*



## **Title:** Toll Bridge Maintenance and Rehabilitation Assessment

### **Scope:**

BATA is seeking cost effective proposals for this effort. The preliminary scope of services may include:

1. Asset Inventory
2. Asset Assessment
3. Review and Assessment of Bridge Maintenance Activities
4. Review and Assessment of Preventive Maintenance Activities
5. Review and Assessment of Inspection and Structural Monitoring Practices
6. Review and Assessment of Toll Bridge Rehabilitation Program, including life cycle analysis





## **Title:** On-Call Project Management, Construction Management and/or Design Services

### **Description:**

The services to be provided include on-call project management, construction management and/or design services for various capital improvements and other projects sponsored by BATA, MTC, BAIFA, MTC SAFE, and BAHA. On-Call bench selection is not a guarantee of work and Agencies reserve right to directly advertise projects. The scope of work is still under development.



**Schedule\*:** To be advertised by BATA in Summer 2017 or earlier

*\*Dates are subject to change. Check the agency website <http://procurements.mtc.ca.gov/> for more information.*



## **Title:** On-Call Project Management, Construction Management and/or Design Services

### **Past Projects\*:**

- Construction administration Guide - CM
- Design specification Boilerplate - DS
- Fastrak® Sign Installation - DS and CM
- Project Controls - CM
- Express Lane - DS and CM
- Bridge Yard Seismic Retrofit and Renovation - DS and CM
- SFOBB Toll Plaza Renovation - DS and CM
- SFOBB Open Road Tolling (ORT) - DS and CM
- SFOBB Toll Plaza Overhead Sign Structure (OHSS) - DS and CM
- SFOBB Metering Upgrade Project (ITS, System Engineering) - DS and CM
- RSRB Access Improvements
- Bay Bridge Trail Bike/Ped Improvement - DS
- West Grand Avenue On-Ramp Improvements Project - DS
- Climate Change/Sea Level Rise Inundation Mapping – DS





# Upcoming Contract Opportunities

## **Title:** I-880 Integrated Corridor Management (ICM) North Segment Construction Management Services RFQ

### **Description:**

The MTC is seeking a consultant to provide construction management services for the I-880 Integrated Corridor Management (ICM) North Segment Project. In addition to typical construction management services, the consultant will serve as overall project manager, with key input from MTC, to oversee and facilitate the timely and efficient completion of work with close coordination with Caltrans, City of Oakland, City of San Leandro, AC Transit, PG&E, and Union-Pacific Railroad (UPRR).

**Schedule\*:** To be advertised by MTC in Spring 2017 or earlier

*\*Dates are subject to change. Check the agency website <http://procurements.mtc.ca.gov/> for more information.*





# Assigning Work



## \*General Information:

- MTC reserves the right to not utilize the bench and issue a separate procurement for the same or similar services.
- Selection to be on the Consultant Bench does not guarantee that a contract will be awarded.
- Assignment of work is typically dependent on the type of work involved and funding source. Check the original bench procurement for how work will be assigned.

## \*A&E versus non A&E work:

- If a project is federally funded and involves A&E work, a mini-RFQ will be issued to all prequalified firms on a bench. This will be a qualifications based selection and price will not be considered or negotiated until a selection has been made.
- If a project is non-federally funded and involves non-A&E work, a mini-RFP may be issued to any or all prequalified firms on a bench or a direct selection can be made if the original procurement allows for it.

# Contracts Staff

Andrew Nguyen

Contracts Specialist,  
[alnguyen@mtc.ca.gov](mailto:alnguyen@mtc.ca.gov)  
(415) 778-6651

Vincent Yee

Contract Specialist  
[vyee@mtc.ca.gov](mailto:vyee@mtc.ca.gov)  
(415) 778-6677

# Project Contacts

Lisa Klein

---

Project Manager,  
[lklein@mtc.ca.gov](mailto:lklein@mtc.ca.gov)  
(415) 778- 5232

Project: Express Lanes  
Program Advisor

Peter Lee

---

Project Manager,  
[plee@mtc.ca.gov](mailto:plee@mtc.ca.gov)  
(415) 778-6716

Projects: Toll Bridge  
Maintenance and  
Rehabilitation Assessment;  
On-Call Project  
Management, Construction  
Management and/or Design  
Services

# Questions?

